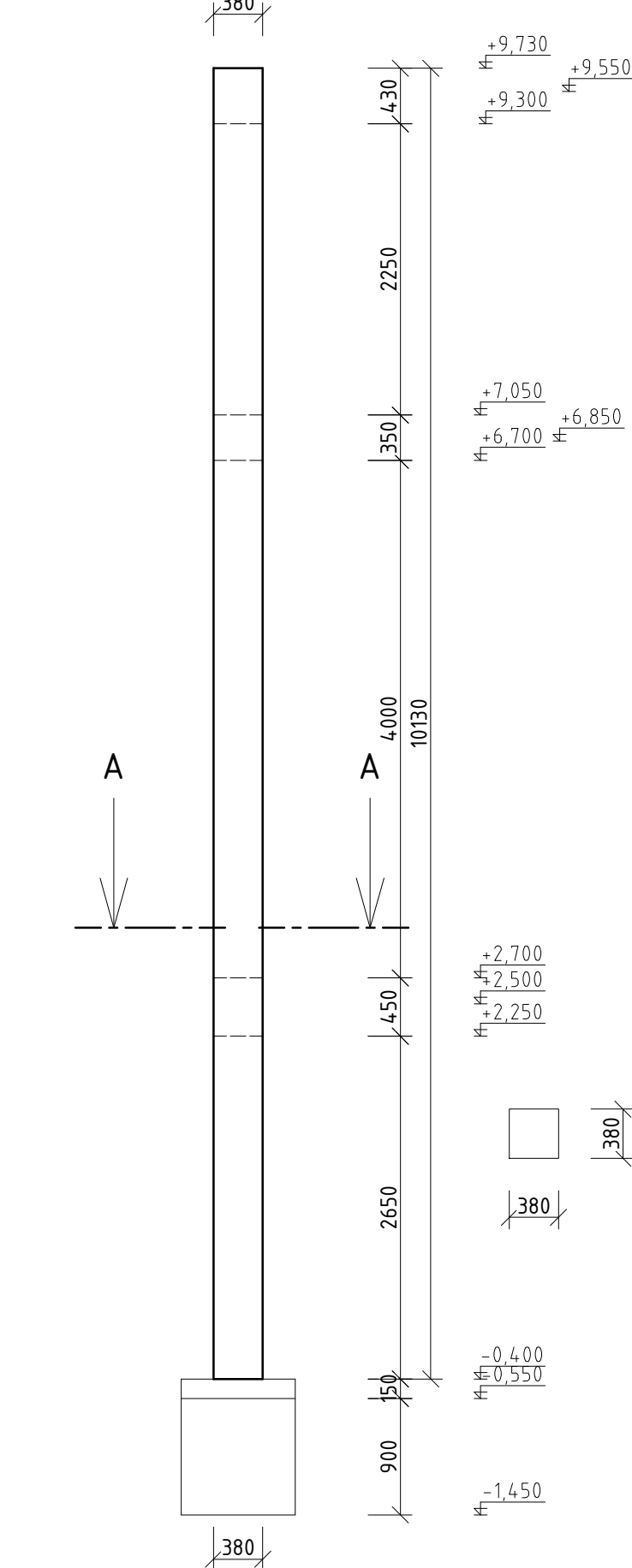
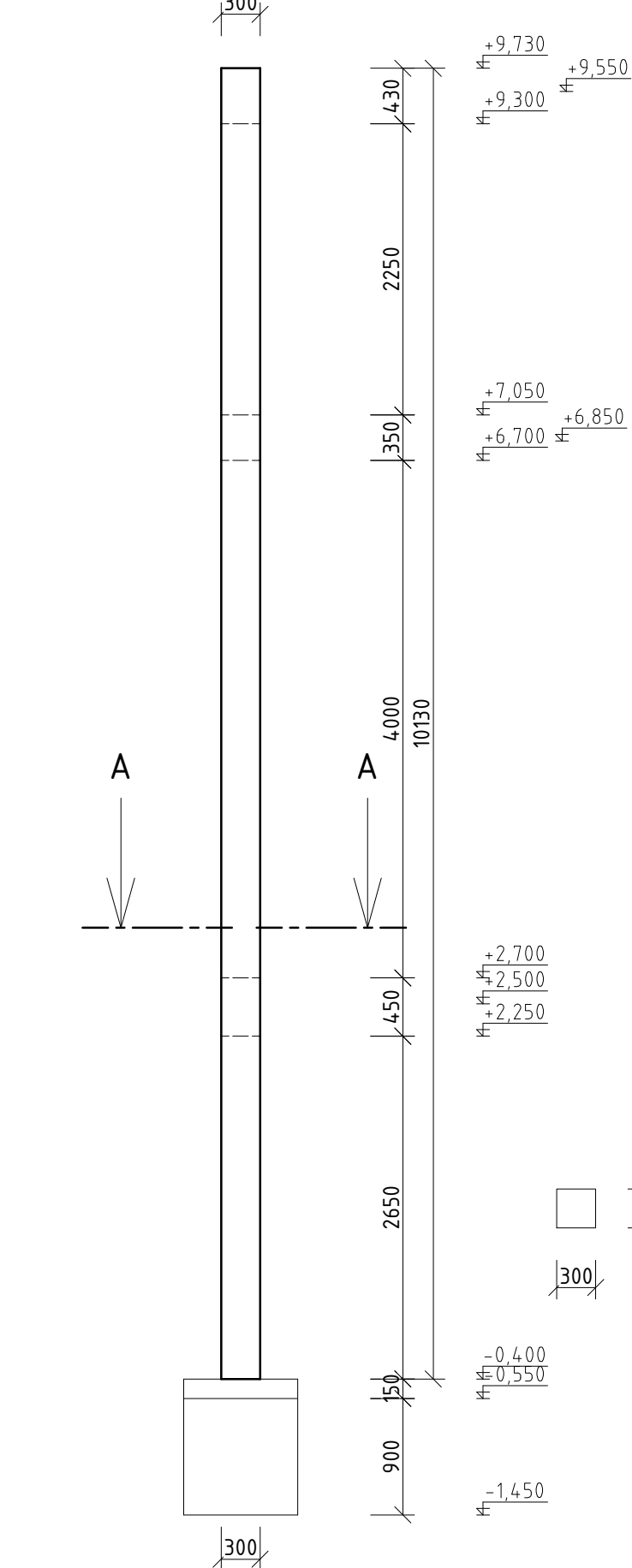


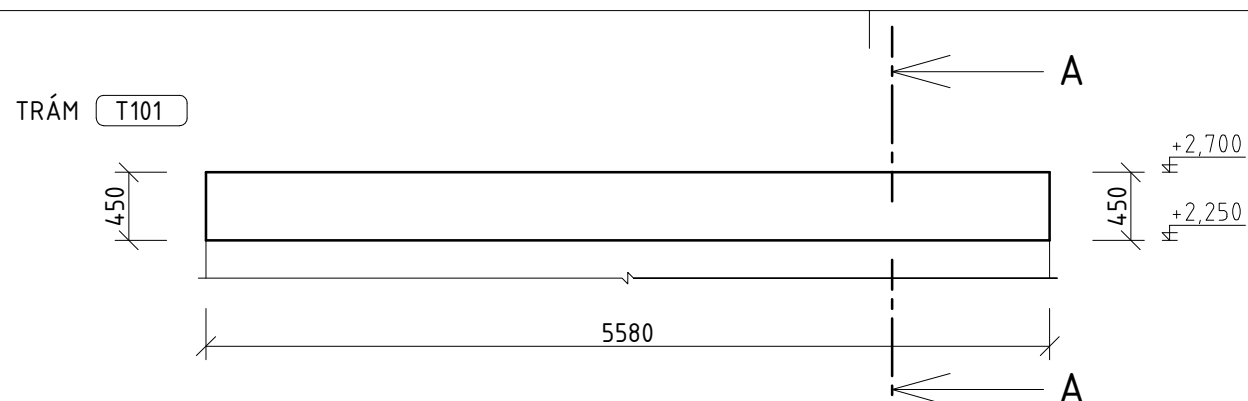
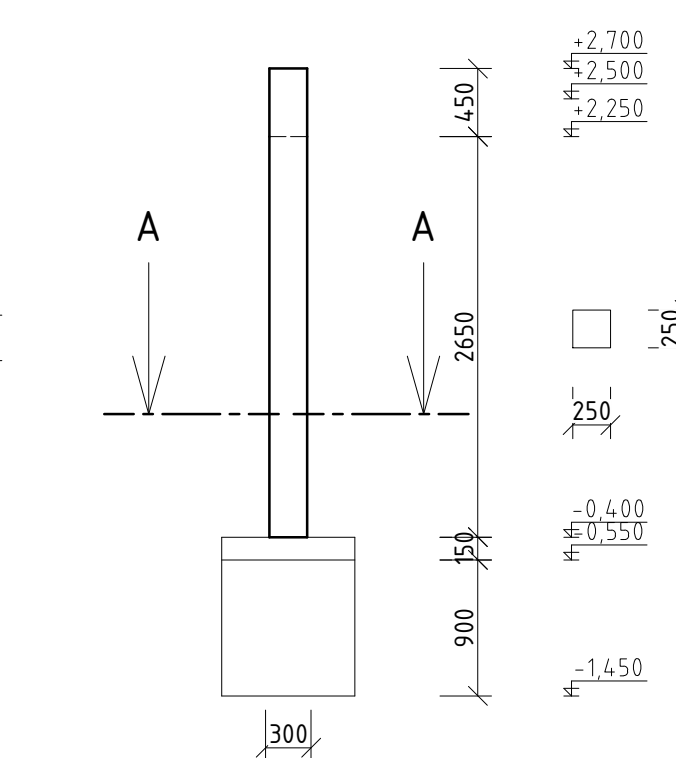
STĽP S101
2ks



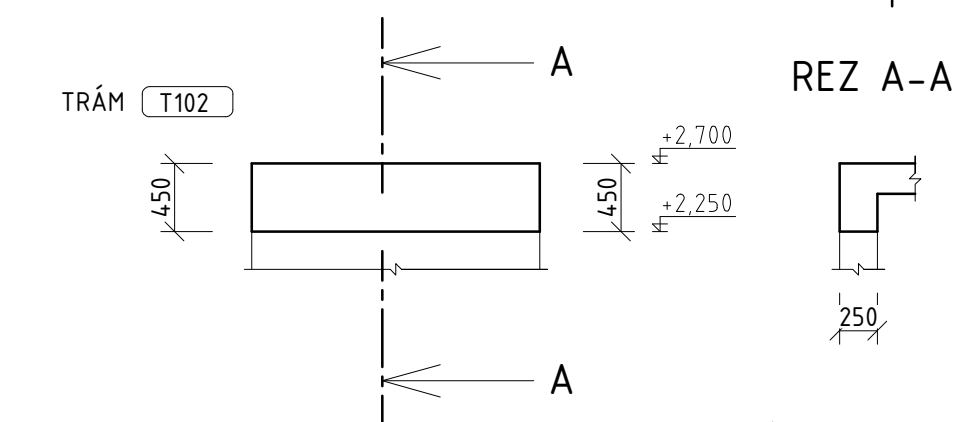
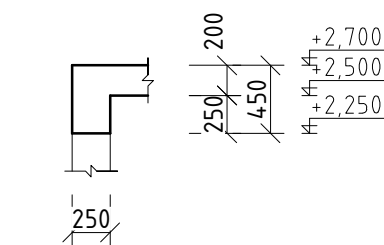
STĽP S102
1ks



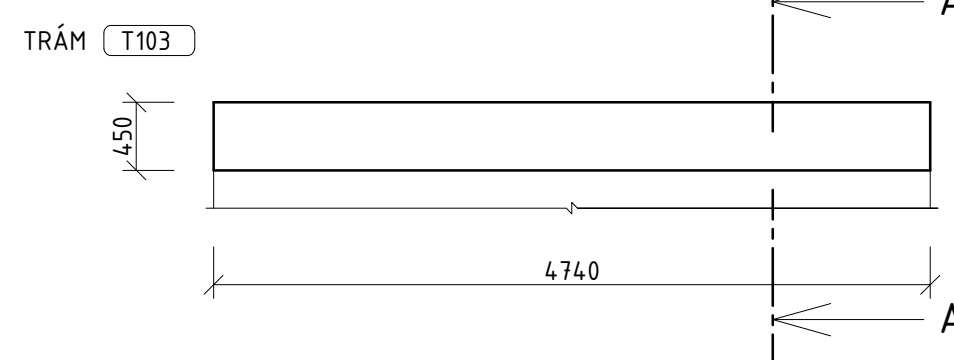
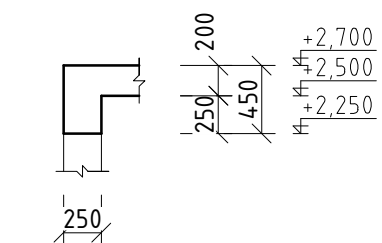
STĽP S103
1ks



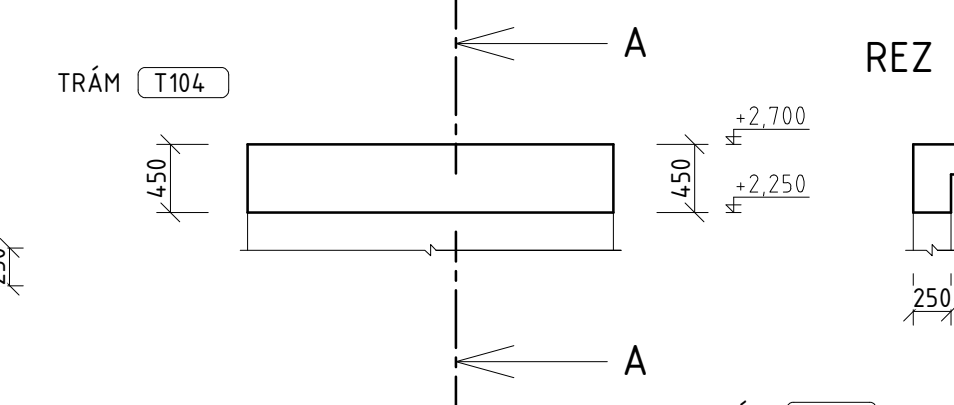
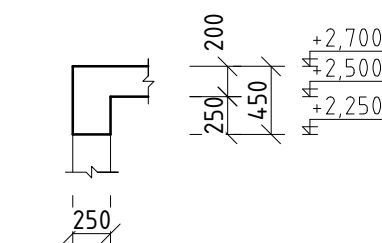
REZ A-A



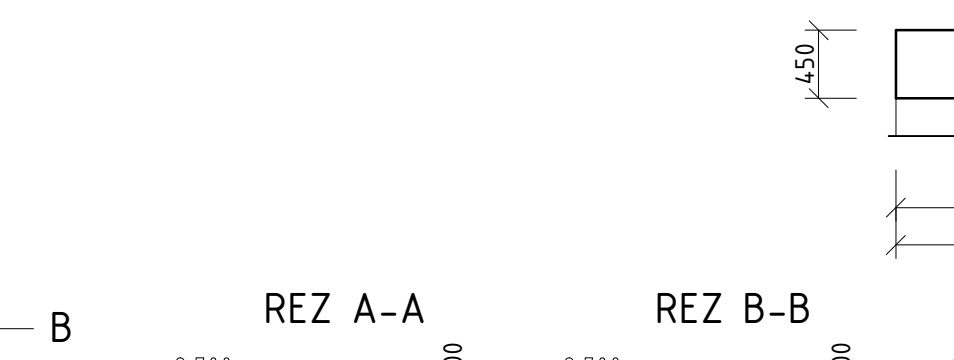
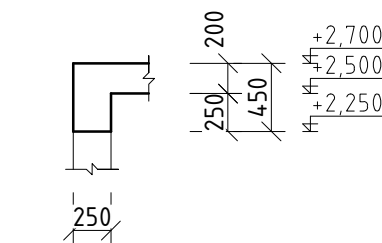
REZ A-A



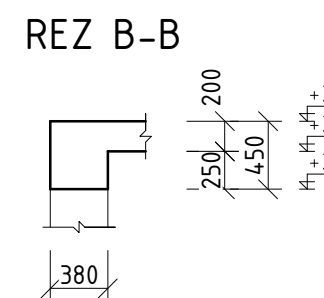
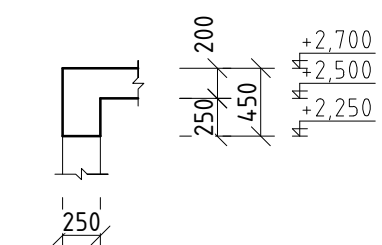
REZ A-A



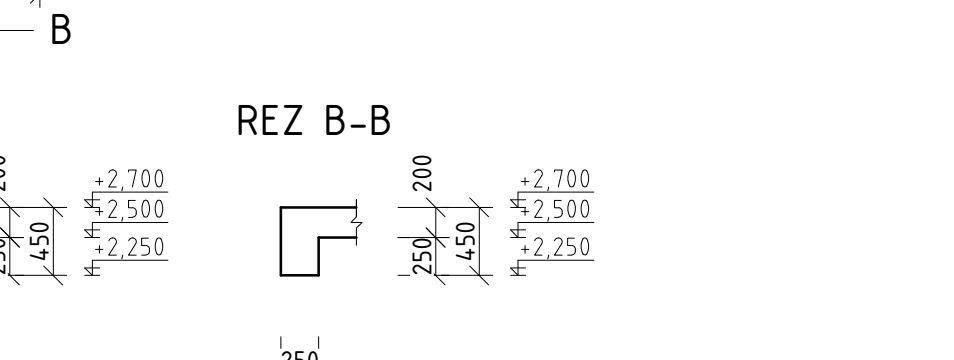
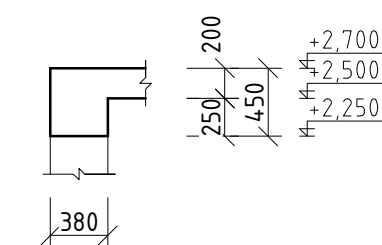
REZ A-A



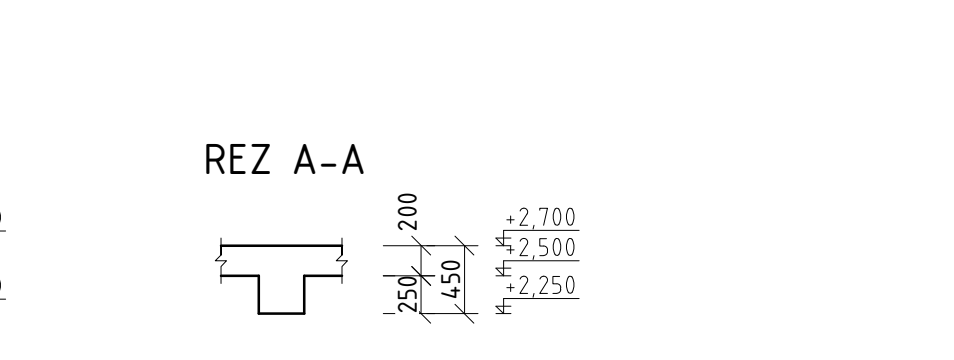
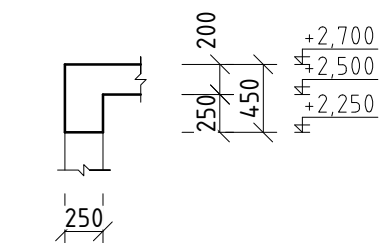
REZ A-A



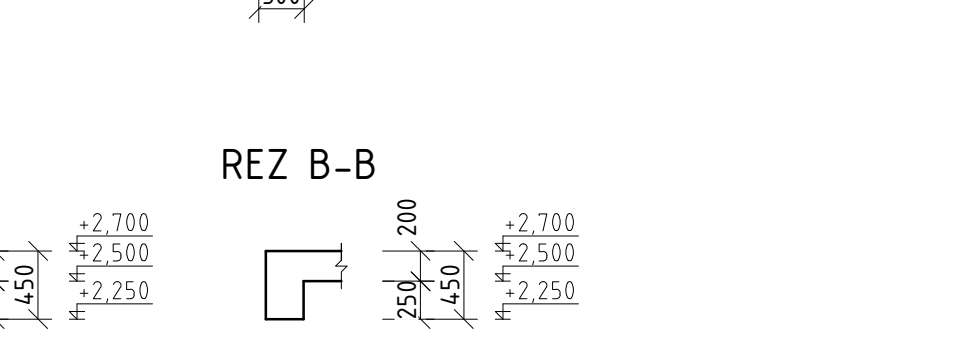
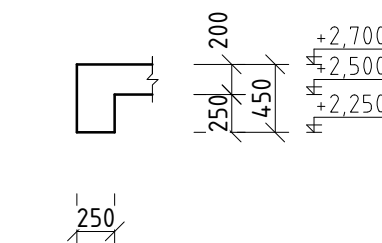
REZ B-B



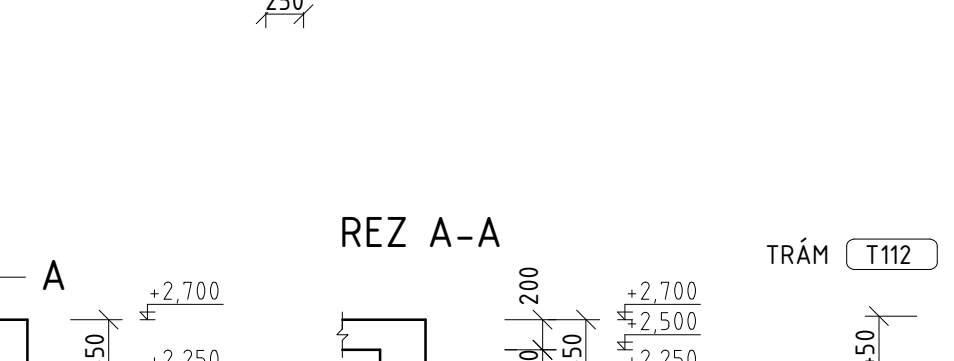
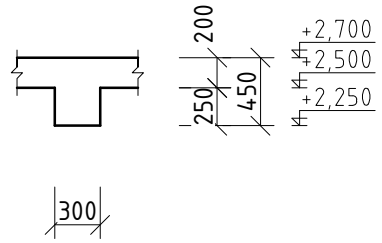
REZ A-A



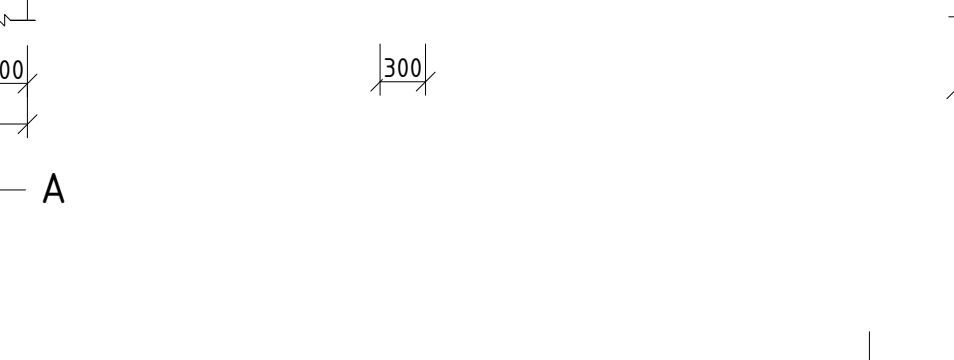
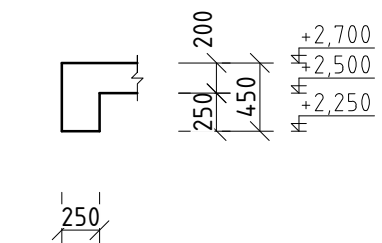
REZ B-B



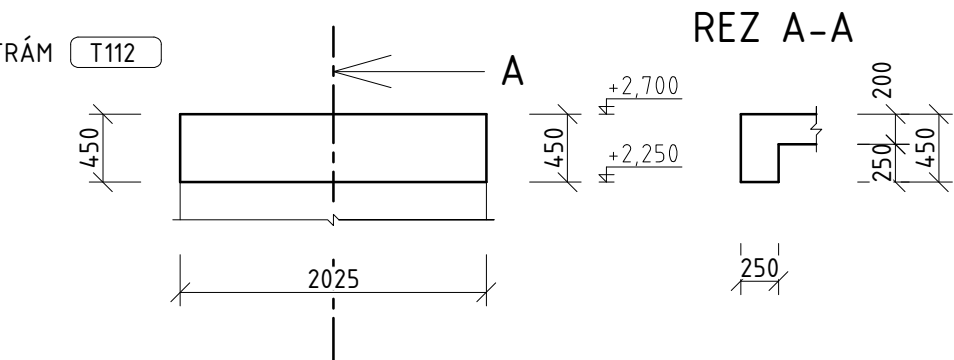
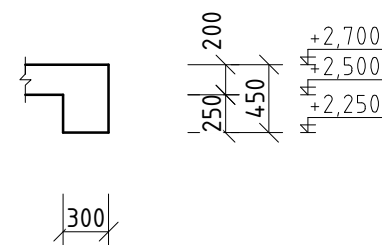
REZ A-A



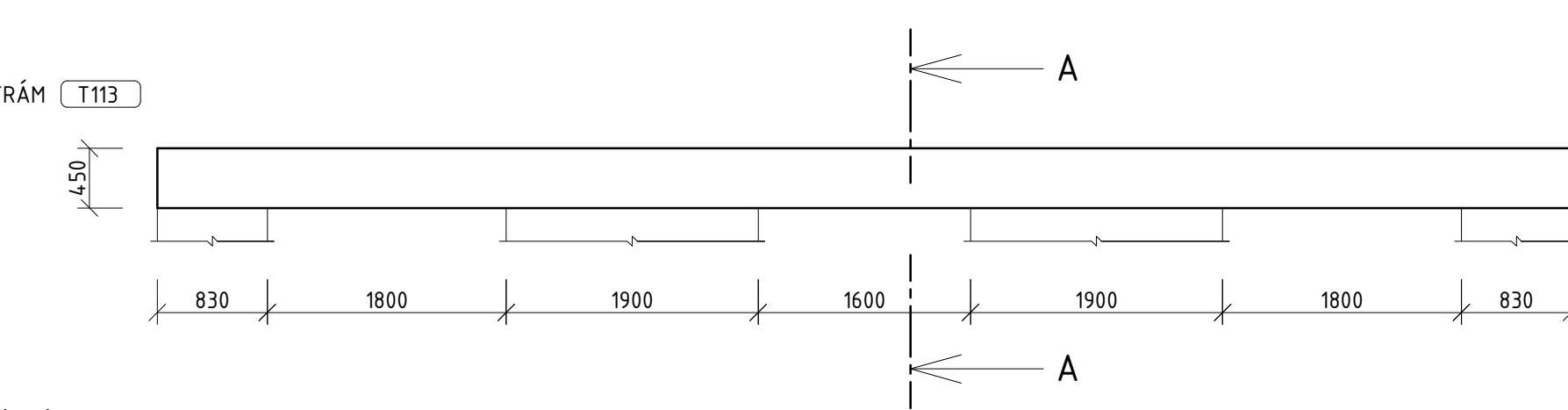
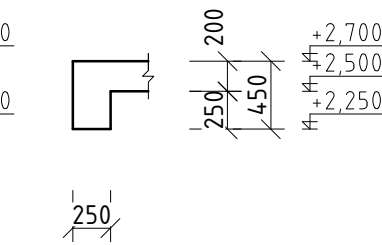
REZ B-B



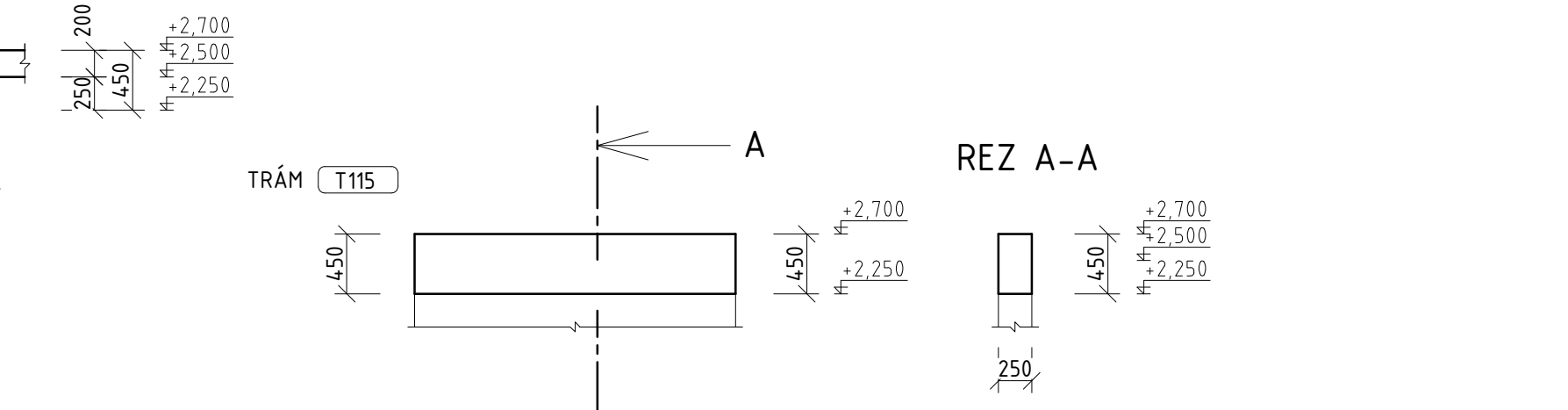
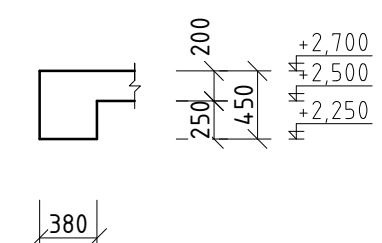
REZ A-A



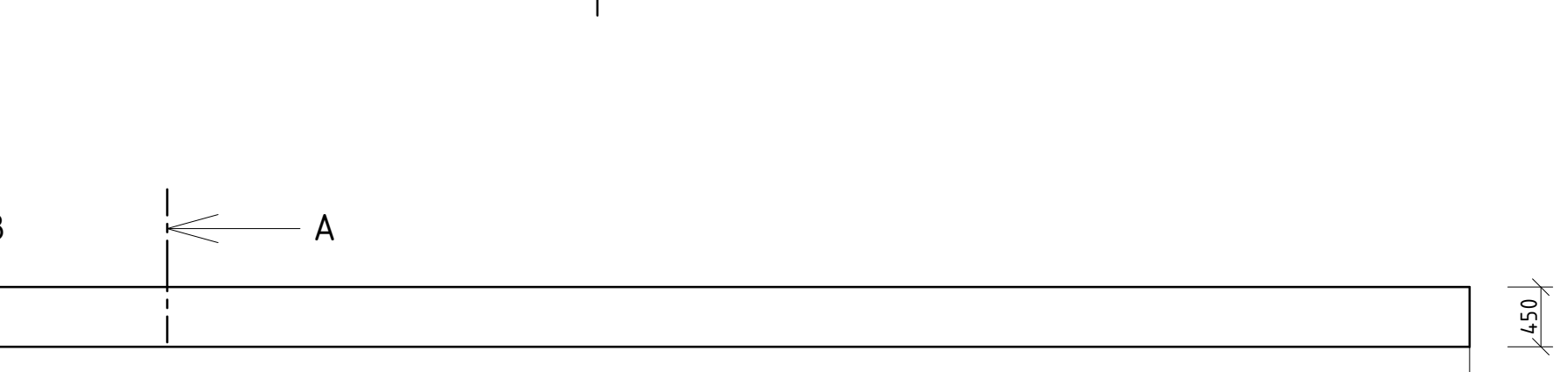
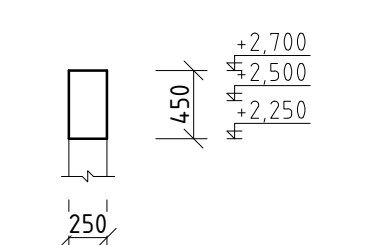
REZ A-A



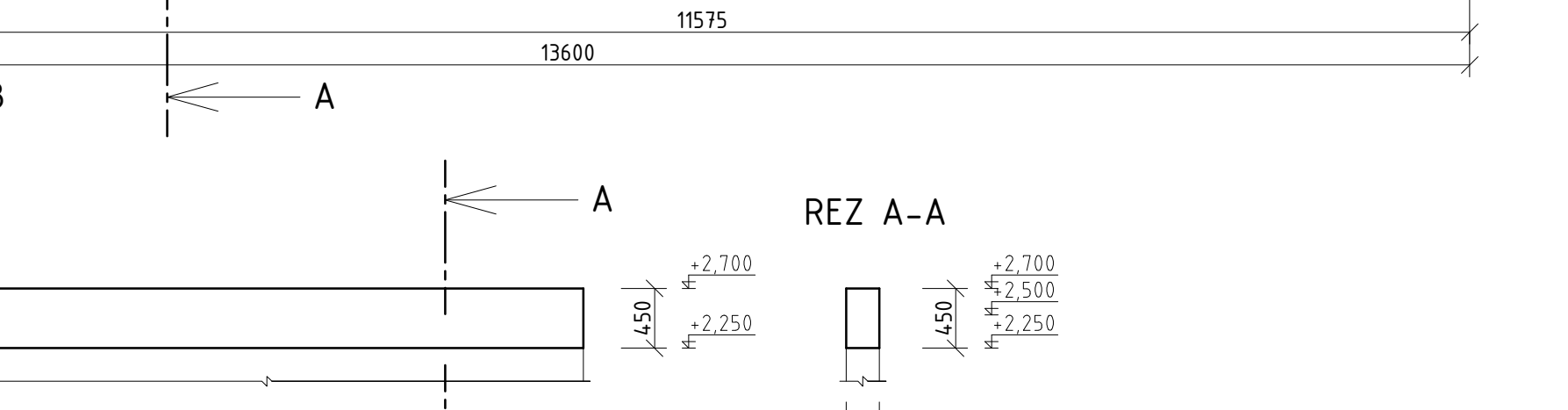
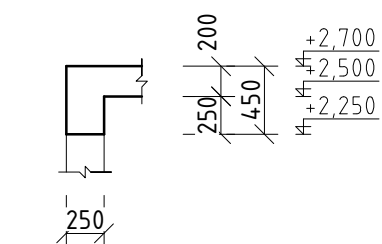
REZ A-A



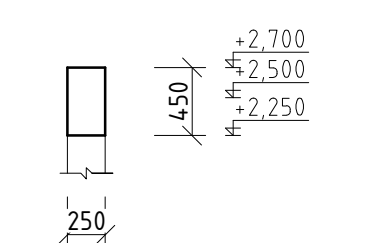
REZ A-A



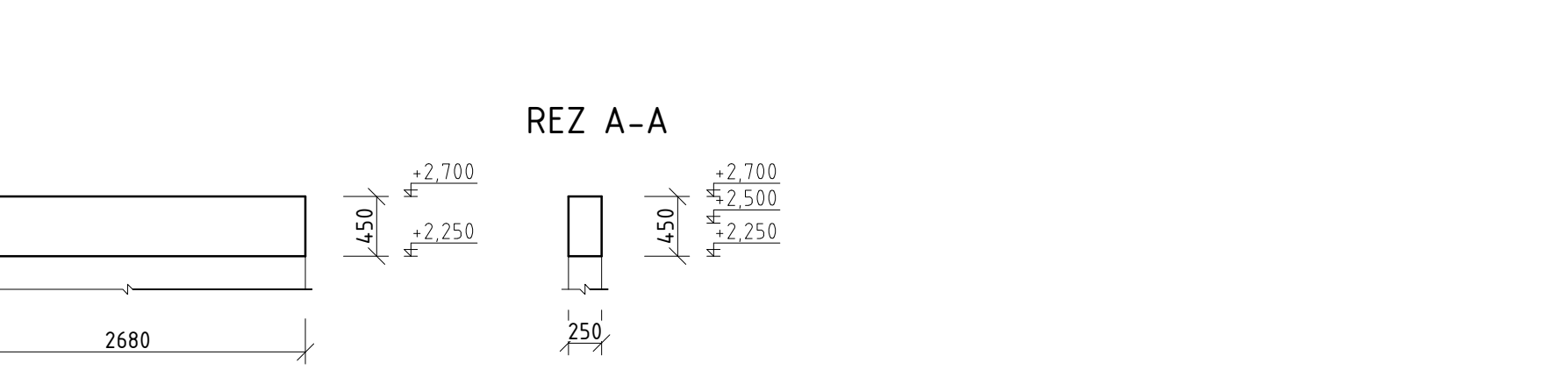
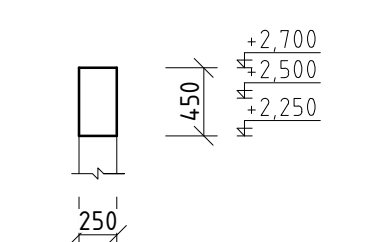
REZ A-A



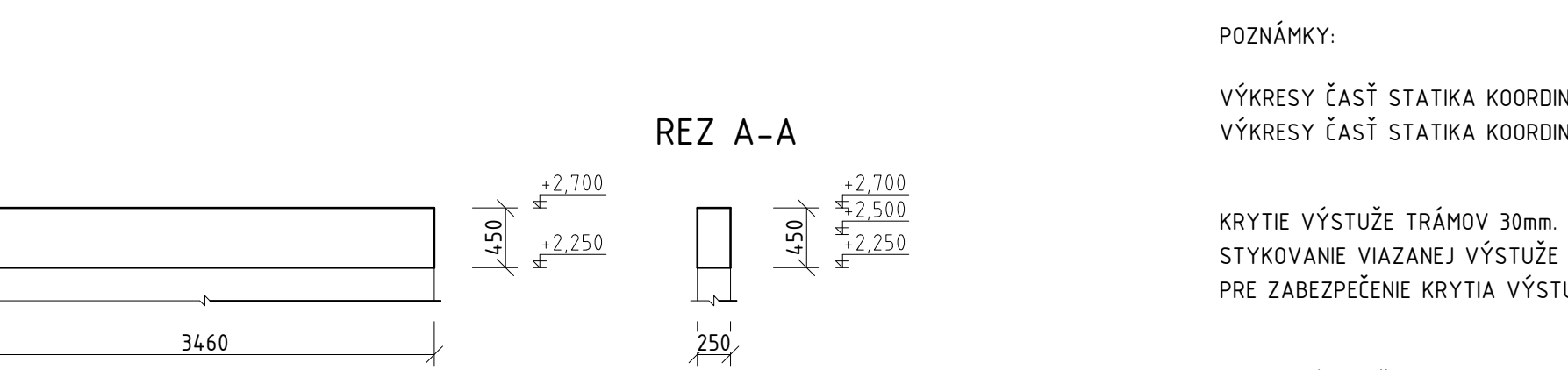
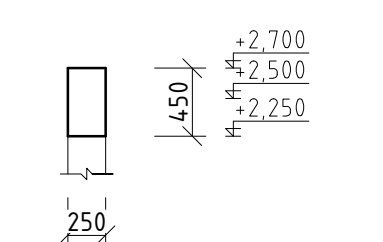
REZ A-A



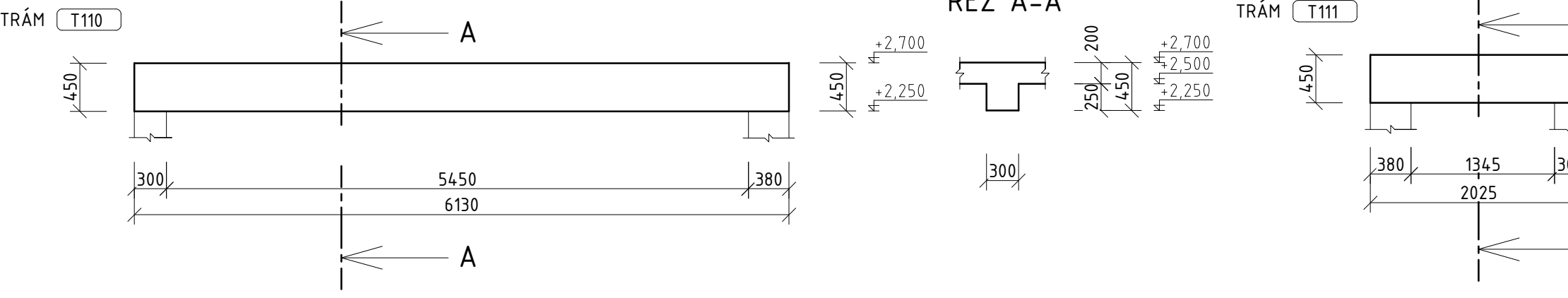
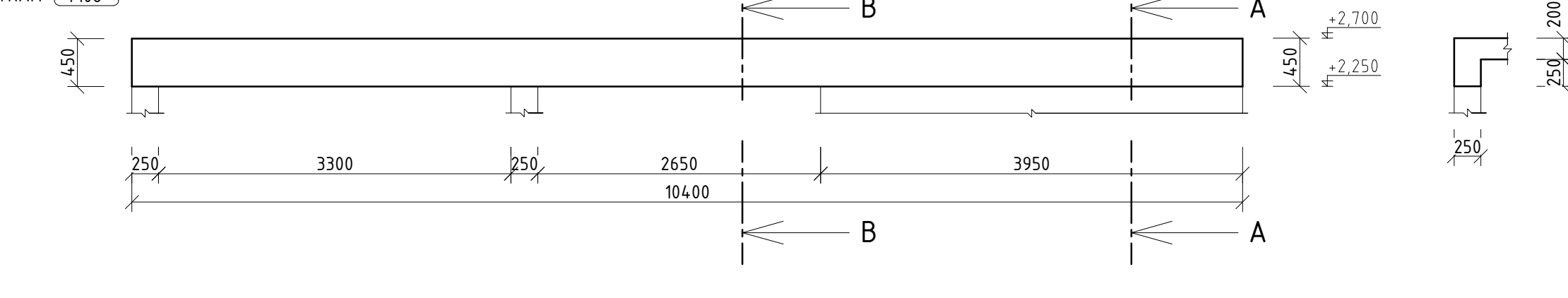
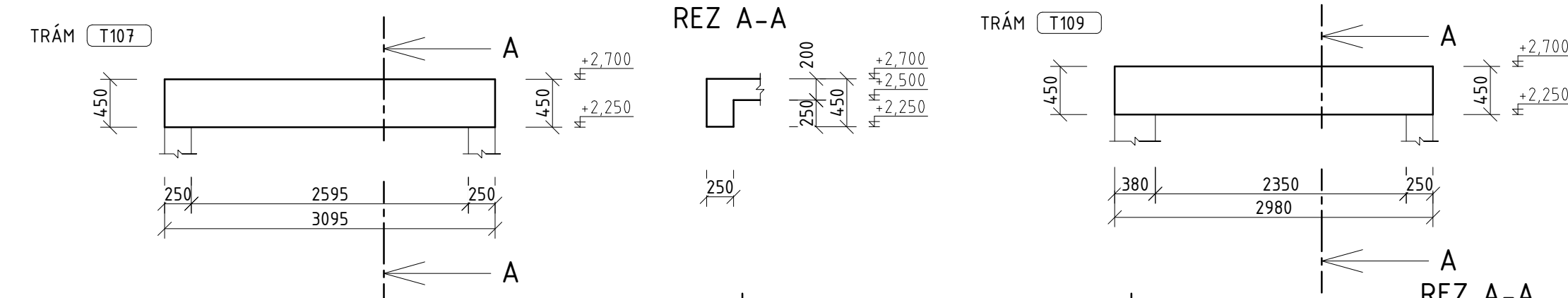
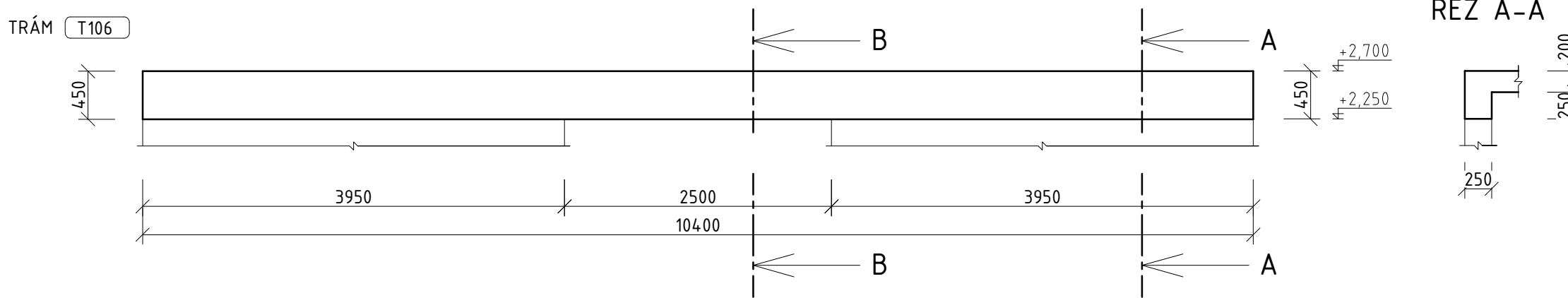
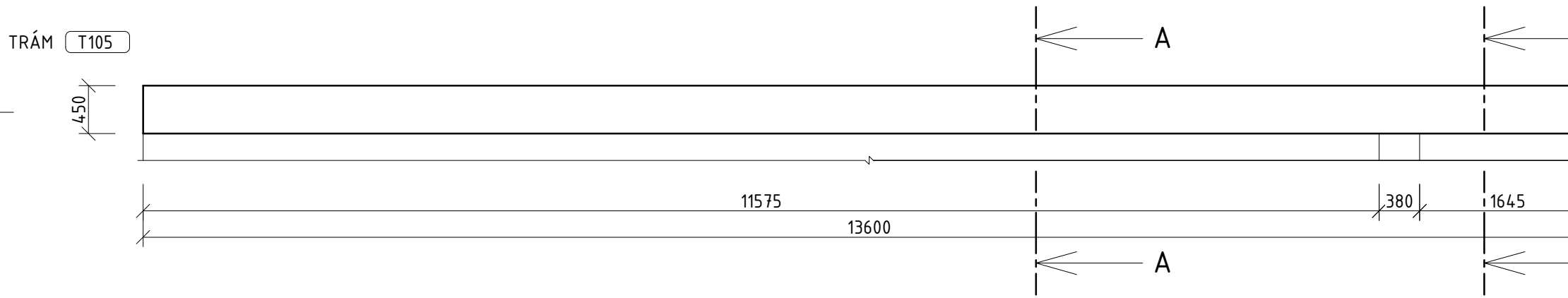
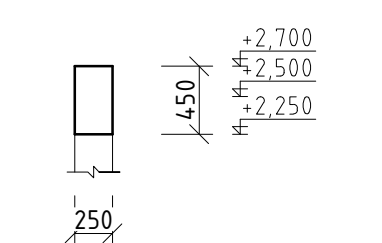
REZ A-A



REZ A-A



REZ A-A




POZNÁMKY:

VÝKRESY ČASŤ STATIKA KOORDINOVAT S VÝKRESAMI ČASŤ ASR.
VÝKRESY ČASŤ STATIKA KOORDINOVAT S OSTATNÝMI PROFESIAMÍ.

KRYTIE VÝSTUŽE TRÁMOV 30mm. KRYTIE VÝSTUŽE DOSIEK 25mm.
STYKOVANIE VIAZANEJ VÝSTUŽE min.50Ø PRŮTA.
PRE ZABEZPEČENIE KRYTIA VÝSTUŽE POUŽÍVAŤ DIŠŤANČNÉ TELIESKA PODĽA PREDPISU.

±0,000 = ÚROVEŇ PODLAHY 1NP = 222,45 m.n.m.
BETÓN STN EN 206 - 1 - C25/30 - XC3(SK) - C1 0,4 - Dmax 16 - S3
BETÓNÁRSKA VÝSTUŽ B500B R 10 505

projektant Ing. Lukáš Tokoš generálny projektant Ing. Lukáš Tokoš	názov stavby Open Sports Center - Multifunkčné centrum	zákonný vlastník  R-PROJEKT HUMENNÉ s.r.o. Fidlikova 5577/5, 066 01 Humenné
profesia statika	stavebník Mesto Snina, Strojárska 2060/95, 069 01 Snina	číslo zákazky
formát 841x594	mesto stavby Strojárska 2060/95, Snina 069 01 SR	stupeň dokumentácie
A1	parc.č. KN C 7527/1, k.ú. Snina	DSP
paré	stavebný objekt SO 01 multifunkčné centrum	mierka
	názov prílohy	150
	výkres tvaru - stĺpy, trámy 1NP	dátum 10/2021
		č.výkresu C-03